



## Woosehill Church Magazine

September - October 2016



*We are on Chestnut Ave, just around the corner  
from The Hawthorns School.  
All are welcome.*

**Find us on our website  
[woosehillchurch.co.uk](http://woosehillchurch.co.uk)**



*Dear Church Family and all other readers,*

Welcome to this bumper edition of the Woosehill Church magazine. It has been quite a challenge as editor to fit in all the contributions and I do hope I haven't missed out anything important!

It is a time of sadness, but also of anticipation as we say goodbye to Paddy, wish him well on his onward life journey and step forward in faith on our own Woosehill journey .

We also move forward with our Partnership in Missional Church initiative and you can expect to hear a lot more about that in the coming months, including requests for volunteers to lead our missional initiative.

It is so good to see so many new faces in church at the moment; we welcome you all and look forward to getting to know you - and once you have settled in, do let us know if you have any hidden talents you would like to share!

*With love,*

*Val*

**DEADLINE FOR NEXT ISSUE:**  
**Sunday 13 November 2016**  
 Articles as usual preferably by e-mail to:  
[valerie.weedon@btinternet.com](mailto:valerie.weedon@btinternet.com)

## IN THIS ISSUE

Editor and contents	2
Clergy letter Rev'd Richard Lamey	3-4
Clergy letter Rev'd Catherine Bowstead	5
Partnership in Missional church - Dwelling in the Word	6-7
A church made of straw Rev'd Richard Dormandy	8-9
Au Revoir from Paddy Rev'd Patrick King	10
More goodbyes to Paddy	11-13
The Steam-Powered Big Draw	14
Does your child have special educational needs?	15
Creation time Rev'd David Hodgson	16-17
Greenbelt 2016 Val Weedon	18
WOW programme 2016	19
Presentation: Dag Bjärnhall	20
Harvest appeal	21
Church and Parish	22
Church contacts	23
Pattern of services at Woosehill Church	24



### **Clergy letter from our Rector**

*The final words of Richard's sermon at Paddy's farewell service  
on September 4th*

“God has chosen Paddy to inspire and build up new vocations in Western Australia. There is always uncertainty with a new role, of course, but extra uncertainties pile in when you are moving to the other side of the world- will Lola be able to speak to the other dogs there or will her accent make them tease her? Will Paddy be able to get Fulham matches on the TV? How can anyone do any work when they live half a mile from the beach? Of course there are real uncertainties as well, in changed relationships, in distance from family, in an unknown landscape.

And yet we are talking here of stepping bravely and decisively into the hands of a God who is constant and loving and close. That in itself is an adventure, what we were made and called to do. Add in a fascinating and worthwhile job helping to discern and develop a new generation of clergy, and a lively city and an outdoor lifestyle and the challenge of making a life in Perth and it's easy to see why this is such an exciting adventure for Paddy. And when people you love and like come to you and say with excitement in their eyes that they have got to do this, the right thing to do is to back them and cheer them on.

This Church and this Parish are also facing a time of uncertainty, of course, as we wait to see who God is calling to come to serve the people of Wokingham, Woosehill and Emmbrook and to help to share and shape our common life.



But that uncertainty must throw us back onto our own experience of God. The vacancy here must act like the large blank wall in a small chapel in Cambridge which inspired us to reflect and to pray more, to offer help and support, to go deeper and deeper into the presence of a God who is constant and loving and close.

Beneath the surface waves which unsettle us is a great and immeasurable depth of grace and love. Being chosen is the start of a vast and lifelong adventure. Belonging to a God who is constant and loving and close is a steady joy. Our mission and our work does not change. We are called still to be the people of God in this place and to help God's Kingdom of love and justice to grow. The job in Perth is just the same. And somewhere out there someone else is responding to a call to uncertainty and adventure, chosen for this place by a God who they too know to be constant and loving and close."

the Rev'd Richard Lamey,  
Rector of St Paul's, Wokingham,  
St Nicholas', Emmbrook  
and Woosehill Church  
0118 327 9116

#### **PADDYS REPLACEMENT**

The Associate Priest post has been advertised nationally in the Church Times with a closing date of the 20th of September, and shortlisting on the 26th of September. Please pray for the whole process and for the right person to come forward and be appointed.

Thanks,

**Richard**



### **Clergy letter from our Methodist Minister**

Dear Friends

Early in September I went on the Rose Street Theatre Club trip to see the Chris Barber Band at the Cadogan Hall and it was a fabulous evening. Not least the figure of Chris Barber himself – 86 years old yet still with the stamina to play trombone and take the lead for much of the evening's concert.

There were 12 members of the band, each with their distinctive role. Sometimes the band played as a whole: each instrument had its own part which complemented and harmonised with the others to produce an amazing sound. At other times each performer had a solo and whilst they took centre stage and enjoyed the limelight the others took a background, accompanying role. What was impressive was how much the musicians appreciated and applauded each other. Chris Barber himself, whilst obviously the leader, didn't hog the limelight or the applause but enabled each of the members of the band to shine. And the band's obvious enjoyment of the music and their working together enhanced the enjoyment of the audience.

What a wonderful model of what the church is or could be like. Each person has an important role to play and whilst they enjoy that role, they are also careful to appreciate the contribution of others. What we can do together is far better and more beautiful than anything we can produce on our own and when we work together and enjoy working together, we are far more attractive to those outside the church.

In this time of interregnum it's particularly important that we work together, helping, supporting and encouraging each other, so that we can be the best that we can be in sharing God's love with the people in our community.

With every blessing

**Catherine**

Rev'd Catherine Bowstead



### PMC Reading: Dwelling in the Word

Part of the PMC adventure is learning to see the world as God sees it and trying new things which might help us to nurture God's kingdom. The other half is learning new ways of praying and listening to God which will help us to plot our course. One of the former is the focus we are putting on helping the new housing estates to flourish as supportive communities of care and encouragement. One of the latter is Dwelling in the Word.

Dwelling in the Word is built on two key ideas: that everyone has a relationship with God, and that everyone has something to contribute to the life of the Church. In PMC we use the same Bible reading for a year. We pay close attention to the reading every time we use it. We share with someone else what has struck us about the reading today, at that moment, and then (if the size of the group allows) we feedback what the other person noticed, talking them into speech.

In Year 1, we focused on Luke 10. 1-12, a reading which emphasises the fact that we are joining in with the work God is already doing, and that our role is simply to bear witness to God and leave the rest to God. Year 2's reading is printed below- why not read through it with a friend over coffee and talk about what inspires you and what confuses you in the reading, what you'd like to ask a passing expert about?

#### 2 Corinthians 4: 1-12

<sup>1</sup> Therefore, since it is by God's mercy that we are engaged in this ministry, we do not lose heart. <sup>2</sup> We have renounced the shameful things that one hides; we refuse to practice cunning or to falsify God's word; but by the open statement of the truth we commend ourselves to the conscience of everyone in the sight of God.



<sup>3</sup> And even if our gospel is veiled, it is veiled to those who are perishing. <sup>4</sup> In their case the god of this world has blinded the minds of the unbelievers, to keep them from seeing the Light of the gospel of the glory of Christ, who is the Image of God. <sup>5</sup> For we do not proclaim ourselves; we proclaim Jesus Christ as Lord and ourselves as your slaves for Jesus' sake. <sup>6</sup> For it is the hearts to give the light of the knowledge of the glory of God in the face of Jesus Christ.

<sup>7</sup> But we have this treasure in clay jars, so that it may be made clear that this extraordinary power belongs to God and does not come from us. <sup>8</sup> We are afflicted in every way, but not crushed; perplexed, but not driven to despair; <sup>9</sup> persecuted, but not forsaken; struck down, but not destroyed; <sup>10</sup> always carrying in the body the death of Jesus, so that the life of Jesus may also be made visible in our bodies.

<sup>11</sup> For while we live, we are always being given up to death for Jesus' sake, so that the life of Jesus may be made visible in our mortal flesh.

<sup>12</sup> So death is at work in us, but life in you."

**Rev'd Richard Lamey**

---

**Words to ponder?**

It ain't those parts of the Bible that I can't understand that bother me, it is the parts that I do understand.

~ Mark Twain



### A Church Made of Straw

Straw has been used in building for many millennia, but when the baling machine was invented in the late 19<sup>th</sup> Century, it became possible to build with giant straw bricks. The first straw bale houses were constructed in Nebraska, by ordinary farming people. A number of these, including the church, are still in good order today.

A century later, straw-bale construction underwent a revival, and for the past 40 years techniques have become refined as the movement has spread globally. So it is that in central South London, just between Brixton, Norwood and Streatham, Europe's first straw-bale church building is underway at Holy Trinity, Tulse Hill.

Anyone who has seen how quickly a field of stubble burns will immediately be alarmed! However, when the bales are packed tightly, there is simply not enough oxygen to sustain a fire. Australian tests simulating bush fire conditions showed that, apart from the face of the bale getting singed, the flames had barely any effect.

Others, recalling the story of the three little pigs, might wonder whether a straw-bale building would be strong enough. In fact they are very resilient. The bales are compressed, staked through, and rendered with thick lime. Tests done in the University of Nevada showed how well they held up in earthquake conditions compared to conventional buildings, because of the combination of strength and flexibility.

But the reason we are building with straw in Tulse Hill is that ordinary local people can get involved. Our project is a community self-build.

The DNA of churches always seems to contain a healthy dose of DIY. At the very least, we make our own cakes and jam, do our own decorating, tend our own gardens. Churches are corporate organisms with a very "hands on" outlook. In Tulse Hill we're turning this to our advantage on a grand scale. We aim to have local volunteers involved in the actual building work as far as possible.

What this also means is that there will be lots of different levels of training available for local people – which is really important in a parish that remains in the 10% most deprived in England. So rather than us producing a building that *will* be used for mission, we are, through the process of building, *already engaging* in mission.

But there's more! Building brings together the diversity of our community in a new focus around the church. Urban communities can often lack cohesion, but straw-bale construction is something that all people of all ages can get involved with in some way. We're not only engaged on a common project, but also a common learning curve.

Straw is nothing more than an agricultural waste product. It's excellent insulation properties, along with the many other green building techniques we'll employ means that the final result will have as low as possible an impact on the

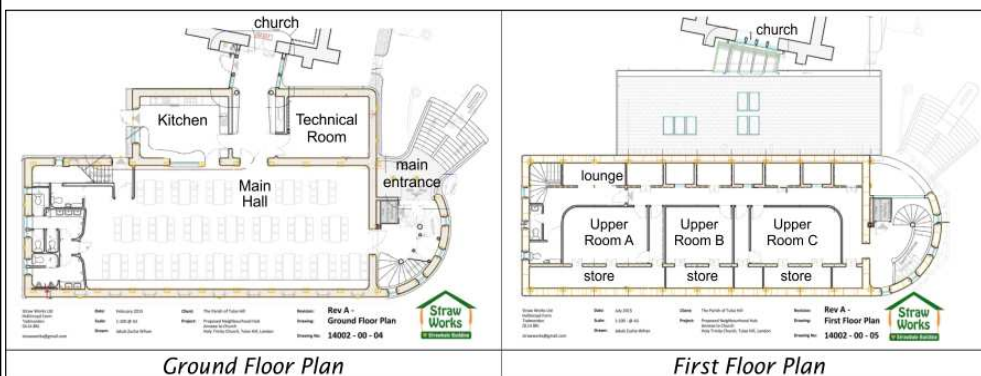




environment. This project brings the inner city and countryside together in practical experience, and also offers a hands-on ecological education.

So what are we building – and how can you be involved?

We're building a large community hall (seating 120 around tables) with toilets and a generous sized kitchen, and three good-sized group rooms in the roof. The building will be linked to the back of the church, but it will also have its own independent main entrance. The overall footprint is about 26m x 10m plus the



Ground Floor Plan

First Floor Plan

kitchen and link.

It's a huge undertaking and we expect it to last up to 200 years. So it's no "back-of-an-envelope" job. We hope to make a start on the foundations before Christmas, but if not it will be early next year. Then we'll build the frame and then the walls, and so on. Right now we're still in the planning and fundraising stages, which will, of course, be on-going. This is where you can help right now, at no cost to yourself! We've been shortlisted to receive £12.5k from Marks and Spencer, but only if we win enough votes! If you can go online, visit [www.mandsenergyfund.com](http://www.mandsenergyfund.com), sign up first, then search for London straw build in the projects. Click on our project and you can watch our film and find out much more. ... And you can vote for us! The M&S website is not terribly well designed and some people have trouble with it. So as an alternative, you can simply email me giving your permission, and I will do all the voting admin for you. My email is [richdorm@googlemail.com](mailto:richdorm@googlemail.com). But don't delay – we only have until 10<sup>th</sup> October. If you'd like to get involved in any other way, ask a question or even make a donation, please feel free to get in touch by email.

Many thanks,

**Richard Dormandy,**

*Vicar of Holy Trinity Tulse Hill, and the son-in-law of John and Kathy Bausor*



### **Au revoir from Paddy**

There comes a time when we all have to move on. Moving house, job, and sometimes even church... perhaps once in a lifetime one might consider living overseas. Often when we consider a change such as this, we'll only contemplate doing one of these things at a time, and fairly rarely even then! A few months ago, when I accepted the post of Vocations Advisor in the Diocese of Perth, Western Australia, I agreed to do all four - change job, move house, emigrate, and leave behind the church communities of Wokingham which are so dear to me – ready to begin my ministry on the other side of the world.

The role will see me living in the context of a theological college, and working throughout the diocese to encourage and nurture vocations to both lay and ordained leadership roles in the church. I will be working closely with the Anglican school and university chaplains, organising retreats and quiet days, producing publications and engaging with new media, preaching and leading workshops in parishes, assisting in the theological education of those called to ministry, and engaging in the life and worship of the theological college. Amongst other things!

It barely feels possible that it has been three years since I came to Wokingham, and I thank everyone for their support during this time. It has been a time of great personal development and growth, and the support I have received in all forms, shapes and sizes, has helped no end. A first post after curacy is a strange time, with new responsibilities, pressures and stresses, but thanks to the friendship shown by everyone here in Wokingham, both in the church communities and in the wider town, I feel well prepared and equipped to move on to my new adventure.

It feels like many exciting things have happened, and are continuing to take place within the church communities of St Paul's, St Nicholas' and Woosehill. I've been delighted and even proud to be part of such a flourishing, supportive, energetic and outward-looking parish - and I hope and pray that continues long into the future. Just as keenly as I'll be sending over photos of dog walks by the Indian Ocean, I shall be looking over to see how things are continuing to grow and develop here.

My thanks, my love and my prayers are with you all, on your continuing journeys of faith both personally and as a community.

**Paddy**



**FOR PADDY .....****FRIENDS**

Packing up the dreams of God planted  
In the fertile soil of you,  
Can't believe the hopes He's granted  
Means a chapter in your life is through.  
But we'll keep you close, as always,  
It won't even seem you've gone  
'Cause our hearts in big and small ways  
Will keep the love that keeps us strong.

And friends are friends forever  
If the Lord's the Lord of them  
And a friend will not say "Never"  
'Cause the welcome will not end.  
Though it's hard to let you go  
In the Father's hands we know  
That a lifetime's not too long to live as friends.

With the faith and love God's given  
Springing from the hope we know  
We will pray the joy you'll live in  
Is the strength that now you show.  
But we'll keep you close, as always,  
It won't even seem you've gone  
'Cause our hearts in big and small ways  
Will keep the love that keeps us strong.

And friends are friends forever  
If the Lord's the Lord of them  
And a friend will not say "Never"  
'Cause the welcome will not end.



Though it's hard to let you go  
In the Father's hands we know  
That a lifetime's not too long to live as friends.  
No, a lifetime's not too long.....  
....to live as friends.

© Michael W Smith 1982





# The STEAM Powered Big Draw @ St Paul's

Science • Technology • Engineering • Art • Maths

Saturday 15th October 2016

11am - 4pm



*The world's biggest drawing festival!*

**This promises to be a great day of fun for all ages.**

But we need help to plan the event and a group of volunteers to help make the day go with a bang!

The 2014 Big Draw attracted over 90 visitors. Can we make more fun for more people this year? Are you able to offer some help?

**For more Information:**  
Speak to Fr Richard, Becca Lamey at the Parish Office, or call Jane Clark on 0789 999 8608 or email, [thebigdraw@spauls.co.uk](mailto:thebigdraw@spauls.co.uk).



Parish Office: 0118 979 2122 | [office@spauls.org.uk](mailto:office@spauls.org.uk) | [www.spauls.org.uk](http://www.spauls.org.uk)  
Parish Rooms, Reading Road, Wokingham RG41 1EH





## **Does your child have Special Educational Needs and/or Disabilities (SEND)?**

From 1st September 2014 The Children and Families Act introduced changes to the support for children and young people who have special educational needs and disability. One of the key changes introduced as part of these reforms was the publishing of a Local Offer which enables parents and young people to see what services and facilities are available in their area and how they can be accessed.

The Wokingham Borough's Local Offer can be viewed on the Wokingham Borough Council website.

If you do not have access to the internet the CAN Network can support you to find the information you require by telephoning: 0118 974 6818

The Local Offer also provides the opportunity for parents, carers and young people to provide feedback on provision available in the borough and comment on the online Local Offer.

The council is keen to hear your views to help us with the continual development of the Local Offer and the provision available. This can be done through our online survey or by contacting the Family Information Service:

Survey: [www.wokingham.gov.uk/lo-survey](http://www.wokingham.gov.uk/lo-survey)

Email: [info.families@wokingham.gov.uk](mailto:info.families@wokingham.gov.uk)

Tel: 0118 908 8466

The online Local Offer also provides information on other changes brought in as part of the SEND reforms, including Education, Health and Care Plans which are replacing statements of SEN.



### Creation Time - 1<sup>st</sup> September to 4<sup>th</sup> October

In 1989 the Ecumenical Patriarch Dimitrios I, the head of the Eastern Orthodox Church, suggested that the 1<sup>st</sup> of September should be observed as a day "of protection of the natural environment". The Orthodox Church year starts that day with a commemoration of how God created the world.

Ten years later the European Christian Environmental Network (ECEN) widened this proposal, urging churches to adopt a Time for Creation stretching from 1st September to the feast of St Francis on 4th October and this was endorsed by the 3rd European Ecumenical Assembly in Sibiu, Romania in 2007, which recommended that the period "be dedicated to prayer for the protection of Creation and the promotion of sustainable lifestyles that reverse our contribution to climate change".

Since 2008 Churches Together in Britain and Ireland (CTBI) has encouraged churches to observe Creation Time, during the five weeks starting on 1st September, covering the run up to and celebration of the Harvest Festival in most of our churches, and finishing on the 4<sup>th</sup> October the feast of St Francis known for his great love of nature.

In addition, in 2015 Pope Francis established an annual day of global prayer for creation to be celebrated on 1st September; in harmony with the one already established in the Orthodox Church:

*"The annual World Day of Prayer for the Care of Creation will offer individual believers and communities a fitting opportunity to reaffirm their personal vocation to be stewards of creation, to thank God for the wonderful handiwork which he has entrusted to our care, and to implore his help for the protection of creation as well as his pardon for the sins committed against the world in which we live."* Pope Francis

During this year's Creation Time, Canon David Hodgson, Rector of All Saints has uploaded a daily photograph and a reflection on to the Churches Together in Wokingham Facebook page. (If you 'do' Facebook, do have a look at the CTW page.)





On day 5 David Hodgson posted this lovely photo of a butterfly, with this comment: "This photograph depicts a Marbled White; which is widespread and expanding in central and southern England, South Wales and east Yorkshire. But the general outlook in Britain for biodiversity is not so good. Climate change and habitat loss is having a significant impact. A recent major study has found that many of the species that perform the important role of pollinating plants and trees such as bees, moths and hoverflies are in decline; as are those such as ants which act as important pest controllers. Increases in some species like the Marbled White butterfly are not compensating for the loss of the others. "

**David Hodgson**

"We do not need to be heroes to save the world; all we need is humility, a critical view of the commercial and political interests of those who would mislead us into wrong-doing, and a sense of wonder." John Burnside (New Statesman, 22 April 2013)

**St Paul's Parish Bazaar**

**Remember, remember -----**

**Saturday 5th November**



**St Paul's Parish Rooms**

**12 noon - 3.30pm**



**Grand Draw, Cakes, Raffle, Games,  
Lunches, Bric-a-brac, Tombola,  
Preserves, Second-hand Books,  
Teddy Tombola, Afternoon Tea,  
and more!**





### Greenbelt 2016

Over the August Bank Holiday weekend Colin and I went for the third year running to this arts, faith and justice festival in the beautiful grounds of Boughton House, Northamptonshire. Over three days a series of talks, music, arts, performance and worship events take place under canvas and in the open air (we are wimps and don't camp). This year we experienced a mini-tornado on the Saturday afternoon but spirits were not dampened and for the rest of the time we (unusually for Greenbelt!) basked in glorious sunshine.

So what were the highlights for us? Well they would be different since we did not always go to the same events. On the Saturday morning I enjoyed Satish Kumar a peace and environment activist and former monk talking about his new trinity, Soil, Soul and Society, followed by the ever engaging and insightful John Bell who as a spiritual exercise is currently reading only chapters of the Bible which refer to women. He was the warm up act for the Archbishop of Canterbury, Justin Welby, in conversation with Kate Bottley, vicar of Gogglebox fame. Quite a morning!

Sunday morning at Greenbelt is always the Festival Holy Communion and literally thousands attend, forming small groups of 15-20 to share a communion bag of bread and wine or grape juice. This year it was extra special as it was led by the children attending Greenbelt who, with adult support, had put together their own liturgy over the previous two days. This was by no means a children's service but a chance for us all to experience the familiar words from a different perspective. There was even a Q and A session with the Archbishop in the middle, which he clearly enjoyed!

There is always a big focus on the situation in Palestine at Greenbelt and this year a group of young people from the Aida refugee camp in Bethlehem featured in the Playhouse alongside artists who had performed on the West Bank, supported by the admirable small charity Embrace the Middle East and also the Amos Trust.

Other highlights for me were a talk on Faith in Politics by Mark Russell, the CEO of the Church Army based in Sheffield; a talk about Muslim fashion from a Guardian journalist; Sally Magnusson talking movingly about her mother who suffered from Alzheimer's disease and about which she has written a book - I bought it if



anyone would like to borrow it. It was not all serious though and Harry Baker the slam poet (difficult to describe what he does) as usual brought the house, or rather the canvas roof down with his entertaining and creative word play. And around the site as usual were vans selling great coffee, fresh doughnuts and international food such as falafels, Goan fish curry and fish and chips.

We have come back as energised and enthused as in previous years and have already bought our tickets for next year.

**Val**

---

**WOW\***

**October** - Cake night. All ladies welcome, please bring a home-made cake and the recipe to Lynne Paine's house, 34 Tiffany Close on **Wednesday 19th October** at 7:30pm. We will taste the cakes and then recipes can be shared. If you are not a cook you are still most welcome to come and taste.



Refreshments provided by Jenny & Lynne.

0118 9774257, lynnepaine@yahoo.co.uk or jennyamassey@hotmail.com

**November** Christmas gift wrapping at Woosehill Church

Contact gillian\_payne @msn.com 0118 9619100



**December** Beer and Carols at the Leathern Bottel

TBA Louise and Mike Cole?



\* Women of Woosehill meet monthly, for a variety of activities and in a different location each time.

Please contact Gillian Payne for more details:

gillian\_payne@msn.com



### **Presentation: Dag Bjärnhall**

My name is Dag Bjärnhall. I grew up in the northern part of Sweden, but today I live in Växjö, in the south of the country. I have two daughters, Lovisa, who is 23 and Karolina, 20, who have both moved away from home. My wife and I divorced five years ago.

Among my interests are being out in nature, sports, and all kind of cultural activities, particularly what bears on human existential themes.

I am a priest in the city-and-cathedral parish of Växjö city, serving as what we call a 'komminister' in a team. I work mostly with adult education and development, with respect both to growth in faith and opening up the faith for newcomers. The kinds of thing that I think are helpful are meditative services, pilgrimages, retreats and dialogue-groups.

In 1999 I presented my doctoral dissertation in Comparative Religion (on the idea of revelation). I'm interested in religious dialogue and the meeting of faiths and cultures.

After 13 years in my present position in Växjö, I feel I'd like a new stimulus and the Anglican Church seems to me interesting in many ways - I see both similarities and differences in comparison to the Swedish Church. It will be great, as well, to have the opportunity to use English for a period of several months. I hope I can make a contribution to your church life during my stay - and I hope you will have patience with my less than perfect command of your language!

I'm looking forward to being with you this autumn and winter.

**Friendly regards in Christ,**

**Dag Bjärnhall**

**Minister in the Swedish Church**

**Växjö**

**Sweden**

**August 2016**



**Harvest Festival at Woosehill - Sunday October 2nd at 10am  
Alternative Harvest appeal**

Yeldall Manor ( Christian drug & alcohol rehabilitation centre ) would particularly appreciate your alternative Harvest gifts of:

- Men ' s boxer shorts or socks ( new! )
- Toiletries ( mid-range shower gels, deodorants & disposable razors )
- Mugs ( new or used ) ,
- Plain white cereal bowls
- Plain stainless steel cutlery

For those who prefer to give a more conventional Harvest gift, we can still make use of instant coffee, vegetable oil, olive oil, tinned tuna and tinned tomatoes

**And don ' t forget the Foodbank!**

The Wokingham Foodbank is extremely grateful to the churches that donate their Harvest Festival collections to us. It really helps replenish our stocks so we can supply those who are struggling to put food on their tables.

Currently we are short of:

Tins of -

- Tomatoes
- Potatoes
- Peas
- Carrots
- Green beans
- Mixed veg
- Meat or pies



And-

Long life fruit juices

Shampoo, toothbrushes and toothpaste

Small packs of teabags ( 40's ) - - and of course, any cash donations



### Church and Parish

**First Steps** for pre-school children and their parents, grandparents or carers to introduce the children to church in a relaxed, fun and friendly way.

**2<sup>nd</sup> Thursday of Each Month (Term Time)**  
**13<sup>th</sup> October; 10<sup>th</sup> November; 8<sup>th</sup> December**  
**9.15am - 10.15am**

**Children's Chapel**  
**St Paul's Church, Wokingham**

Please come along with your pre-school children for **songs, stories, craft activities** and **refreshments**.

For more information call Richard Lamey 0118 327 9116  
 or Liz Gallagher 0118 989 1176.




---

#### 2016 Sermon Series

**“ Horrible Heresies:**

**Why what we believe really matters”**

**As part of Choral Evensong**

**@ 6.15pm**

#### **October 16th**

Kate Harrison, Curate of New Windsor

Worship as an entertaining hobby

#### **November 20th**

Graeme Fancourt, Rector of St Bart's and St Luke's, Reading

Is orthodoxy heresy?

---

#### **St Nicholas Emmbrook -**

**‘The church at the heart of the community’**

**Praise and Pizza**

You are warmly invited to **Praise and Pizza** at Emmbrook Village Hall

**On Sunday 30 October at 6.15pm**

Sing some favourite hymns, enjoy some pizza and chat with friends

All welcome





**Church contacts**

**Rev'd Richard Lamey**, The Rectory, Holt Lane 0118 3279116  
richard.lamey@spauls.org.uk

St Paul's Parish Office, Reading Road, Wokingham RG41 1EH  
0118 979 2122 ( Parish administrator Becca Lamey)  
office@stpauls-wokingham.org.uk

**Rev'd Catherine Bowstead**  
5 Chetwode Close, Wokingham RG40 2LL 0118 978 1756  
minister@wokinghammethodist.org.uk

For room hire bookings at Woosehill contact Tony Sayer on 0118 9786560  
or email tony.sayer@ntlworld.com

**Regular meetings**

**Tuesday**

**Fellowship group\*\***: Exploring Faith at 8pm in the church.  
Contact : Rev'd Richard Lamey

**Wednesday**

**Tadpoles group**: Coffee and play for pre-school children and their carers  
9.00-11.00am in term time.  
Contact: Val Weedon: 0118 9791156 or valerie.weedon@btinternet.com

**Lunchtime fellowship**: meet in the church at 12 noon. Bring your own lunch  
and enjoy fellowship and discussion of the Gospel reading for the following Sunday.

**Thursday**

**Together in prayer**, monthly on third Thursday, a small group meet for prayer  
in the church 8-9pm. Contact Lyn Brown 9782816

**Saturday**

**Church work party**: first Saturday in month 10.30am  
Contact John Hoskins: 9792597



### **Pattern of Services at Woosehill Church**

Keep an eye out in the newsletter for more up to date information too; you can receive this weekly by email.

Contact Alison at: [woosehill.church@googlemail.com](mailto:woosehill.church@googlemail.com)

#### **1st Sunday:**

**8.45am Holy Communion**

**10am Morning Worship**

#### **2nd Sunday:**

**10am Holy Communion**

#### **3rd Sunday**

**8.45am Holy Communion**

**10am Morning Worship**

#### **4th Sunday**

**10am Holy Communion**

**6.15pm Evening Reflective Worship**

#### **(5th Sunday)**

**10am Café Church**

**5.30 pm Suffolk Lodge service**

We are a relaxed and friendly church; we welcome everybody into our church. We have an informal and friendly style of worship which aims to be inclusive to all. Many of our services have a children's activity and we have a popular Sunday Club most weeks in term time.

Woosehill Church is an Anglican – Methodist partnership; witnesses together of God's love here on Woosehill and beyond.